

Shared Services and Family Engagement

Steven A. White
Sheltering Arms, GA

TSG 158508, Sheltering Arms Final P... 1

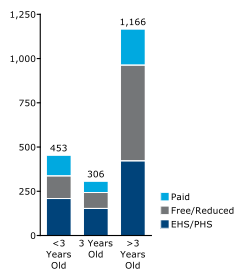
Our new 2Gen model provides 'Universal Supports' to all families

- Universal Supports include
 - Assistance for 4 year olds to **transition to Kindergarten**
 - Support for **children with special needs** (i.e. Special Care Plans, IEPs, or ISFPs)
 - **Targeted event/workshop invitations** based on family interests/goals
 - **Referrals** to services
 - Access to **brochures/print materials** available in Sheltering Arms centers/website

TSG 158508, Sheltering Arms Final P... 2

Intensive family support services should vary based on age of youngest child and family income

Number of Families with Youngest Children in Each Income Group

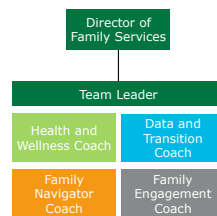


- Each group will receive a different combination of 'Intensive Supports':
 - Interest survey
 - Bridge assessment
 - Goal plan
 - Goal plan check-ins
 - Home visits
 - Weekly check-ins
 - Coaching
 - Weekly personal contact

TSG 158508, Sheltering Arms Final P... 3

Our new family support model will consist of five teams supporting 2-3 centers each

TEAM STRUCTURE



Dir. Of Family Services	Ensures functioning of entire system
Team Leader	Coordinates activity of team members
Health and Wellness Coach	Addresses families' need for mental health, nutritional, special needs, etc. services.
Data and Transition Coach	Completes enrollment, collects data, assists with PreK transition
Family Navigator Coach	Conducts BRIDGE assessment, sets goals, assists parents with connections to adult services
Family Engagement Coach	Assists with parent events, volunteers, capacity building, center fundraisers, etc.

- All five teams report to the director of family services
- Teams receive support from specialists

TSG 158508, Sheltering Arms Final P... 4