

Steuben Child Care Project
Integrated Care Assistance Network (I-CAN)
Bath, NY

Sponsoring Organization

Steuben Child Care Project
a division of Pro Action
117 East Steuben Street
Bath, NY 14810
Phone: (607) 776-2126
Fax: (607) 776-4873
Email: hibbardc@proactioninc.com
www.proactioninc/sccp.org

Contact Person

Carla Hibbard, Director
hibbardc@proactioninc.com
(607)776-2126 ext. 234

Service Delivery Area

Steuben County New York

Type of Organization

Child Care Resource and Referral Agency
A not for profit 501(c) 3

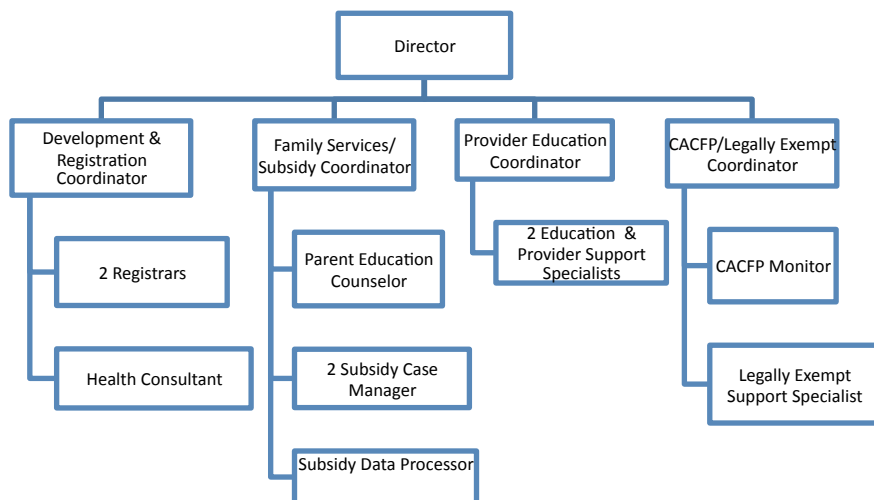
Summary of Approach

The Steuben Child Care Project (SCCP) is building a shared service Alliance, called I-CAN, as part of the multi-purpose child care resource and referral agency. Services available through I-CAN membership include: reduced training fees, access to programmatic equipment and technology, bulk purchasing for food and programs supplies, business training and supports, access to and training for the MinuteMenu Pro (billing and management) software, contract and policy development, tax preparation, program environmental assessment and assistance in developing quality improvement plans.

In addition to I-CAN services, the Steuben Child Care Project provides myriad services to parents and early learning programs, including: child care resource and referral, parent education, and facilitated enrollment into the child care subsidy program for parents; education, training, and technical assistance for providers; Child and Adult Care Food Program (CACFP) administration, micro-loans, health care consultancy, and child care subsidy payment administration. SCCP is also the Registrar for Family Child Care and School Age programs, which includes registering, inspecting, and compliance monitoring. SCCP also enrolls legally exempt providers who wish to participate in the child care subsidy program. The I-CAN is under the umbrella of the CCRR.

Staffing responsibilities for the I-CAN comes under the SCCP Education Department.

Staff



Date Program/Alliance Began

Steuben Child Care Project has been in operation since 1985, the I-CAN expansion was added in 2002.

Funding

I-CAN received start-up funding from the Appalachian Regional Commission. The project builds on broader, SCCP services supported by the Steuben County Department of Social Services, NYS Office of Children and Family Services, fee for service for education programs, foundation grants, and the USDA Child and Adult Care Food Program.

Participating Providers

Currently 12 Family Programs and 1 Child Care Center are participating in I-CAN. Additionally, the Steuben Child Care Project provides services to 108 Family Child Care Programs, 11 Child Care Centers and 12 School Age Programs.

Population Served

Steuben County, NY lies in the northernmost section of the federally-designated Appalachian region. It is a vast rural county, larger than the state of Rhode Island, but hosts a population of only 98,726. The population of Steuben County is 96.4% white, 1.4% African-American, and the remaining 2.2% of all other ethnic groups.¹ Children under age 19 represent 28.6% of the county's total population, and just under half of these (47%) are under age 10.

¹ Source: Census 2000: www.census.gov.